

## VEGETATION OF THE CARY ARBORETUM

## Tree Core Data Sheets

Date: 12-7-84Cores Read By: Annie Narahara

Plot #	Core #	Species Code	Minimum Age	Radius (cm)	Pith? (Y/N)	Years of Release	Dates of Declines
53	1a	QUBI	57	10.7	Y	1937	1980-1984 1941, 1956

Comments:

54	1a	QUAL	82	22.5	N	1914 1925	1923 1929, 1939, 1959
----	----	------	----	------	---	--------------	--------------------------

Comments:

PITH NOT PRESENT BUT 1ST RING INDICATES ITS LOCATION.

60	1b	QURU	109	17.4	Y	1922 1974	1889 1959, 1981
----	----	------	-----	------	---	--------------	--------------------

Comments: 1911-1912 rings 1890-1920 - DIFFICULT TO READ

61	1	QUAL	98	18.3	N	1974	1959
----	---	------	----	------	---	------	------

Comments: PITH?

69	1b	QURU	71	28.7	N		1961 1981
----	----	------	----	------	---	--	--------------

Comments: appears to be at least one more ring before pith.  
1982-81 rings close together

* 75							
------	--	--	--	--	--	--	--

Comments: MISSING CORE

82	1a	QURU	57	16.9	N		1933 1956, 1981
----	----	------	----	------	---	--	--------------------

Comments: 1982-81 rings close together.

87	1a	QURU	61	24.9	N	1971	1959 1966, 1981
----	----	------	----	------	---	------	--------------------

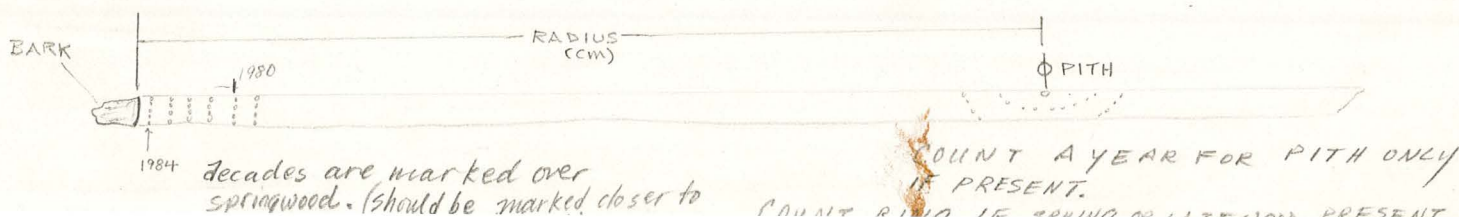
Comments: 1982-1981 rings close together. rings near pith difficult to read.

89	1a	QUVE	69	21.8	N	1981	1939 1957
----	----	------	----	------	---	------	--------------

Comments: rings at 1982-1981 counted as 2 though spacing is close. FAINT LATEWOOD LINE OF 1981.  
Questionable at PITH. Could be 1916 instead of 1915.

92	1a	ACRU	67	22.1	N	1932	1926 1949
----	----	------	----	------	---	------	--------------

Comments: very difficult to read! PITH IS QUESTIONABLE. core may be short?



## VEGETATION OF THE CARY ARBORETUM

## Tree Core Data Sheets

Date: 12-7-84Cores Read By: A.M.N.

Plot #	Core #	Species Code	Minimum Age	Radius (cm)	Pith? (Y/N)	Years of Release	Dates of Declines
93	1a	QUBI	99	23.2	N	15	1895 1962 1939 1981

Comments:

98	1a	QUPR	57	9.7	Y	1937	1936 1939, 1948
----	----	------	----	-----	---	------	--------------------

Comments:

100	1a	QUVE	52	15.5	N	1967	1939, 1959, 1981 1949, 1965, 1977
-----	----	------	----	------	---	------	--------------------------------------

Comments: 1981-1982 ring close; thin latewood section for 1982. Better view ON SIDE.

101	1a	QURU	52	19.9	N		1981
-----	----	------	----	------	---	--	------

Can see springwood of 1934 (barely)

Comments:

107	1a	QUVE	63	19.0	N		1958
-----	----	------	----	------	---	--	------

Comments:

147	1a	QURU	61	13.2	N	1960	1957 1981
-----	----	------	----	------	---	------	--------------

Comments: ring is wide at 1982 but counted as ONE RING → NO → RECOUNTED as 2 rings. LATEWOOD PRESENT.

170	1a	QURU	57	12.6	N	1972	1933 1954, 1980
-----	----	------	----	------	---	------	--------------------

rings 1981-1982 close. thin latewood line 1981.

Comments:

252	1a	ACRU	24	8.9	N	1977	1974 1980
-----	----	------	----	-----	---	------	--------------

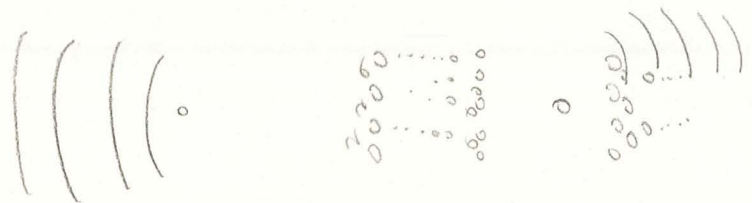
Comments: very faint lines (marked w/ dots)

300	1a	QUPR	75	17.0	N		1962 1980
-----	----	------	----	------	---	--	--------------

Comments: rings 1981-1982 close.

407	1a	ACSA	63	13.4	N	1963	1943 1958
-----	----	------	----	------	---	------	--------------

Comments:





## VEGETATION OF THE CARY ARBORETUM

## Tree Core Data Sheets

Date: 17 DEC 1984Cores Read By: Annie Narahara

Plot #	Core #	Species Code	Minimum Age	Radius (cm)	Pith? (Y/N)	Years of Release	Dates of Declines
456	1a	ACSA	106	16.3	Y	1905 1912, 1959	1906 1949

Comments: rings are light in some areas - inconsistent in appearance.

476	1a	LITU	51	14.0	N?	1949 1951	1947 1950, 1962, 1970
-----	----	------	----	------	----	--------------	--------------------------

Comments: fairly easy to read. Fast growing. (Not core to read)

500	1	QUAL	109	17.3	N	1889 1927	1890 1895, 1961 →
-----	---	------	-----	------	---	--------------	----------------------

Comments: Mounted on side ☹️. Rings very closely spaced in some areas. read rings on nearest side. CHECK AGE ✓

502	1*	QUVE	35	14.7	N	1967	1957 1964, 1977, 1981
-----	----	------	----	------	---	------	--------------------------

Comments:

502	1	QUVE	48	15.2	N	—	—
-----	---	------	----	------	---	---	---

Comments: THERE ARE 2 CORES MARKED 502. 502 1\* MAY BE QUVE (502) minimal change in growth rate. 502 1 MAY BE FRAM (503)

504	1	BELE	72	19.0	Y?	1930	1929, 1972 1932
-----	---	------	----	------	----	------	--------------------

Comments: rings difficult to read earliest springwood in a year is fairly linear. \*

506	1	LITU	36	22.7	N		1981
-----	---	------	----	------	---	--	------

Comments: Lines very faint for latewood.

554	1	ACSA	96	22.5	N <sub>close</sub>	1901 1910	1981 1909 1958
-----	---	------	----	------	--------------------	--------------	----------------------

Comments: (CHECK AGE) 1900-1920 lines in latewood or separate years? counted as separate. (x)

555	1	QURU	71	18.0	N	1972	1939 1949 - slight, 1981
-----	---	------	----	------	---	------	-----------------------------

Comments: 1982-81; 1971-70; and mid 1960's - rings are very closely spaced.

556	•	QUPR					
-----	---	------	--	--	--	--	--

Comments: MISSING CORE

\* 503 is missing (FRAM)

## VEGETATION OF THE CARY ARBORETUM

## Tree Core Data Sheets

Date: 17 DEC 1984Cores Read By: Annie Narahara

Plot #	Core #	Species Code	Minimum Age	Radius (cm)	Pith? (Y/N)	Years of Release	Dates of Declines
565	1a	QURU	63	20.5	N	1942 1967	1949 1962 1977 1981

Comments:

565	2b	BELE	76	13.9	N	1935	1931 1938, 1956
-----	----	------	----	------	---	------	--------------------

X read as 2 years - may be one.

Comments: 1960-1984 difficult to read. (1.7 magnif.)

567	1a	CAGL	164	12.8	N		1874
-----	----	------	-----	------	---	--	------

Comments: slow growing.

569	1a	PIST	113	18.9	N	1904	1894 1914
-----	----	------	-----	------	---	------	--------------

Comments: XX counted as single rings - line present in latewood.

598	1a	QUVE	130	19.4	N		1898, 1965 1915 - slight
-----	----	------	-----	------	---	--	-----------------------------

Comments:

600	1a	QUPR	151	21.9	N	1847; 1901, 1920 1855 (single), 1889 1859 (single)	1849 1909 1979 1875 1938 1895
-----	----	------	-----	------	---	--	-------------------------------------

Comments: RINGS VERY CLOSE TOGETHER - sometimes just a single line of springwood.

601	1a	QUPR	10	19	N	1937 1976 1960	1936 1968 1949 1957
-----	----	------	----	----	---	-------------------	---------------------------

Comments:

601	1b	?	66	14.3	Y	1926 1961 (single) 1940 1971	1925 (single) 1982 1939 1959 1962
-----	----	---	----	------	---	------------------------------------	--------------------------------------

Comments: could be PIST. 1980's difficult to read. \* May be off one at beginning. (1980's)

602	1a, 1b	QUPR	148	22.2	N	1841 1972 1938	1840 (single) 1845 1962 1872 1981
-----	--------	------	-----	------	---	-------------------	---

Comments:

602	1a, 1b	QUPR	303?	22.1	N	1696 1762 1953 1707 1789 1961 1725 1791	1684 1732 1977 1699 1773 1710 1954
-----	--------	------	------	------	---	---	--

Comments: very slow growing.

2 cores labelled same.

trees may be QUPR or QURU? - CHECK PLOT.

data shows one core sample



## VEGETATION OF THE CARY ARBORETUM

## Tree Core Data Sheets

Date: 17 DEC 1984Cores Read By: AMN

Plot #	Core #	Species Code	Minimum Age	Radius (cm)	Pith? (Y/N)	Years of Release	Dates of Declines
605	1	QURU	111	20.5	N	1883 1937 1900 1972 1915 1982	1879 1932 1977 1886 1949 1909 1962

Comments:

626	1	QUPR	131	17.5	Y?	1874 (single) 1881 (single) 1928, 1938, 1973	1873 (single) 1875 1934 1882 1958, 1981
-----	---	------	-----	------	----	--	---

Comments: *last section should be turned around to read correctly.*

634	1a	QUPR	144	17.7	N	1849 1861 (single) 1888 (single)	1848 (single) 1855 1862, 1889
-----	----	------	-----	------	---	--	-------------------------------------

Comments:

635	1a	QUPR	154	14.9	N	1838 1911 1940 1854 1975 1891 (single)	1835 1892 1950 1848 1913 1873 1928
-----	----	------	-----	------	---	--	--

check w/charlie (LOOK AT CHANGES W/IN A WIDTH CLASS) 1930's and 1950's especially close-ringed.

Comments: *read lines below core for measurements.*

tilt core slightly away for easier reading. 1854 → 1872 gradual fluctuations.

636	1a	QURU	77	21.0	N	1942 1968	1918 1957 1934 1980
-----	----	------	----	------	---	--------------	------------------------

Comments:

637	1a	QURU	61	14.3	N	1941 1963	1940 (single) 1948 1962 (single) 1981
-----	----	------	----	------	---	--------------	---

Comments:

639	1a	ACRU	68	19.0	N	1925 1938 1967 1927 1941 1976 1935 1951	1923 1931 1924 1934 (single) 1943 1968 1926 1936, 1937 1952 1979
-----	----	------	----	------	---	---	--

Great variation, sometimes only a single ring at a time.

Comments: *some rings are very wide - check for rings w/in these.*

657	1a	QUAL	91	17.3	N	1897 (single)	1898 1923-gradual narrowing all the way into 1980's
-----	----	------	----	------	---	---------------	--

Comments:

659	1a	ACSA	76	15.8	N	1924 1963 (single) 1982 1968	1923 (single) 1964 1929 1978 1939 1981
-----	----	------	----	------	---	------------------------------------	--

Comments:

664	1a	QUPR	72	11.7	N	1937 1967 1953	1923 1949 1981 1939 1962
-----	----	------	----	------	---	-------------------	-----------------------------

Comments:

## VEGETATION OF THE CARY ARBORETUM

## Tree Core Data Sheets

Date: 18 DEC 1984Cores Read By: Annie Narahara

Plot #	Core #	Species Code	Minimum Age	Radius (cm)	Pith? (Y/N)	Years of Release	Dates of Declines
667	1b	FRAM	54	9.1	N	1958 1968	1939 1964 1954 1981

Comments: Good core to compare a the rings on either side of "Pith".

672	1a	QURU	63	22.5	N	1960	1939 1959(single) 1948 1981
-----	----	------	----	------	---	------	--------------------------------

Comments: 1982-81 rings close. 1949-50

672	2	ACRU	55	14.1	N	1960 1973	1940 1977 1949 1950
-----	---	------	----	------	---	--------------	---------------------------

Comments: 1981 very little growth (NOT RECORDED ON DATA SHEET)

697	1a	QURU	120	18.4	N	1874(single) 1881(single) 1905	1940 1875 1939(single) 1882 1949 1888 1954
-----	----	------	-----	------	---	--------------------------------------	--

Comments: PITH LOCATION? Probably at break.

698	1a	TSCA	76	21.8	N	1965(single) 1976	1964(single) 1972 1978
-----	----	------	----	------	---	----------------------	---------------------------

are these rings in latewood w/in a year?Comments: CHECK AGE

699	1a	PIST	61	24.7	Y	1930 1975 1966 1969(single)	1949 1970 1965(single) 1979 1967
-----	----	------	----	------	---	-----------------------------------	--

Comments: rings difficult to read in some areas. - H<sub>2</sub>O helps.

699	2a	ACRU	57	11.6	Y	1936 1954(single) 1945 1956 1952(single) 1961(s)	1935(single) 1953(single) 1955(single) 1944(single) 1960(single) 1951(single) 1962 1981
-----	----	------	----	------	---	--	---

Comments:

702	1b	QUPR	145	18.2	N	1858 1927 1873(single) 1972 1922(single)	1848 1923 1981 1874 1933 1881 1962
-----	----	------	-----	------	---	--	--

Comments:

707	1a	ACRU	43	12.9	N	1968	1964 1978
-----	----	------	----	------	---	------	--------------

Comments: difficult to read.

731	1a	QUPR	140	15.7	N	1851(single) 1856(single) 1890	1972 1852 1923 1857 1973 1899 1981
-----	----	------	-----	------	---	--------------------------------------	--

Comments: 1982-81 rings close together.



## Tree Core Data Sheets

Cores Read By: *AMN*

MIN. AGE	RELEASE	DECLINE
61	1935 1960	1940 (single) 1957
	1941	1945 (single) 1963
	1946	1950 1978

THE ABOVE VALUES ARE WITH THE  
"X" REPRESENTING SINGLE YEARS.

Plot #	Core #	Species Code	Minimum Age	Radius (cm)	Pith? (Y/N)	*Years of Release	*Dates of Declines
135	1a	PIST	66	14.9	Y	1931 1939 (single) 1941	1945 1960 1938 (single) 1940 1946 1956 1959 1963 1970 1978
						CHECK AGE.	
						THESE YEARS ARE WITH THE "X" S REPRESENTING TWO "YEARS" EACH.	
Comments: rings very difficult to read. see "X" markings - counted as 2 rings							
139	1a	QUPR	163	22.7	N	1834 1915	1927 1944 1972 1958 1837 1919 1957 (single) 1981 1933
Comments:							
140	1a	QUPR	98	25.5	N	1889 (single)	1890 1907 1981
Comments: PITH IS AT VERY END OF CORE.							
161	1	PIST?	77	15.7	N	1932 1946 1959	1975 1929 1935 1963 1981 1955
Comments:							
167	1a	QUVE	63	14.1	N	1930 1967	1962 1977 1981
Comments: LAST SECTION OF CORE DIFFICULT TO READ.							
171	1a	FRAM	60	20.9	N	1938 (single) 1958 (single) 1963 (single)	1939 1959 1964
Comments: first section mounted on side.							
177	1a	QUPR	86	23.1	N	1958 (single)	1948 1959 1981 1977
Comments: 1982-81 rings close.							
198	1a	ACSA	130	25.8	N	1896 1945 (single) 1948 (single)	1974 1881 1895 (single) 1902 1925 1941 1978 1946
Comments: rings (1970-1980's) difficult to read. seems to be an inconsistency in rings at break next to core							
801	1a	PIST	40	19.6	N	1955 1957 1966	1971 1980 1982 1954 (single) 1956 (single) 1963 1969 1978 1979
Comments: rings difficult to read. counted X as ONE YEAR instead of TWO - may be extra years. Probably lines in latewood break at 1952 may not be between years could be early-latewood							
805	1a	QUPR	119	23.6	N	1875 (single) 1882 (single) 1888 (single) 1959	1890 1907 1916 1874 (single) 1876 1881 (single) 1883 1889 1891 1976 1908 1934
Comments: *1983-82 rings close. (unusual) - perhaps age is off by one?							



## VEGETATION OF THE CARY ARBORETUM

## Tree Core Data Sheets

Date: 18 DEC 1984Cores Read By: AMN

Plot #	Core #	Species Code	Minimum Age	Radius (cm)	Pith? (Y/N)	Years of Release	Dates of Declines
808	1a	QURU	75	27.2	N	1950	1913 1981 1923 1956

Comments: 1982-81 rings close. last section can be read on side furthest from reader.

809	1a	TSCA	150	24.1	N	1864 1889 1921 1840 1885 1930 1954 1874 1895 1927 1845 1920 1936 1962 1886 1902 1937 1866 1923 1939 1978 1973
-----	----	------	-----	------	---	--

↳ backwards fragment.

Comments: rings reverse direction at "1" age very questionable. (fragments)

809	2a	QUAL	72	12.8	X	1940 1967 1917 1959 1976 1958(single) 1963(single)	1923 1962 1939 1964
-----	----	------	----	------	---	--	------------------------

Comments:

826	1a	PIST	54	21.6	N	1934 1951 1943 1947	1942(single) 1978 1946(single) 1949
-----	----	------	----	------	---	---------------------------	---

Comments: 1981 latewood ring very light. "X" counted as 2 years - may be ring w/in latewood.

829	1a	PIST	73	13.7	N	1927 1949 1972 1920 1934 1943 1966 1981 1933 1950 1971 1926 1938 1948 1969 1947 1967 1932 1941 1952 1978
-----	----	------	----	------	---	--

light rings hard to read. extra lines in latewood.

Comments: seems to be split bole - 2 PITHS present? What is dark area at crack? Probably 2 stems grew together.

829	2a	QUPR	52	12.7	N	1940 1945 1982	1939(single)
-----	----	------	----	------	---	----------------	--------------

Comments:

830	1a	QUAL	75	22.2	N <sub>close</sub>	1914 1958 1916 1975 1937	1913 1936 1957 1923 1939 1974 1929 1949 1978
-----	----	------	----	------	--------------------	--------------------------------	--

Comments: (2) mounted on side - read rings at an angle. 1982-81 rings close. counting "X" as a ring - may just be a trailing springwood line.

854	1a	QURU	71	18.2	N	1920	1961 1981 1965
-----	----	------	----	------	---	------	-------------------

Comments: (2) read rings on side furthest from reader, except near pith (read on closest side) 1982-81 rings close together.

859	1a	QURU	74	23.7	N	1938 1967	1923 1949 1933 1957 1939 1981
-----	----	------	----	------	---	-----------	-------------------------------------

Comments: 1982-81 rings close.

1008	1a	QURU	69	15.8	N	1947	1933 1981 1949
------	----	------	----	------	---	------	-------------------

Comments: 1982-81 rings close



4950

# VEGETATION OF THE CARY ARBORETUM

## Tree Core Data Sheets

Date: 18 DEC 1984

Cores Read By: AMN

Plot #	Core #	Species Code	Minimum Age	Radius (cm)	Pith? (Y/N)	Years of Release	Dates of Declines
1010	1a	QUAL	98	18.0	N	1896 1902 1921	1895 (single) 1909 1923 1977 1981

Comments: 1982-81 rings very close

1014	1a	QUPR	97	19.1	N	1960	1890 1948 1959 1981
------	----	------	----	------	---	------	------------------------------

Comments: 1982-81 rings close

1018	1a	QUAL	111	17.2	N	1889 (single) 1906 1911	1921 1972 (single) 1882 1948 1973
------	----	------	-----	------	---	-------------------------------	---

Comments:

Comments:

Comments:

Comments:

Comments:

Comments:

Comments:

Comments: